

# KONNWEI KW206 OBD computer auto meter



- OBDII +EOBD Engine Scanner
- Read & Clear Fault Code
- Speedometer
- Engine temperature gauge
- Oil thermometer
- Boost gauge
- Fuel consumption meter

— 1 —

## 1.Production Description

KW206 OBD computer is a smart and powerful auto meter. It is especially designed for vehicle all meter in one to show all data in screen from speedometer, engine temperature gauge, oil thermometer, and boost gauge and fuel consumption meter. KW206 can also monitor and display battery voltage, engine charging voltages, over speed alarm, engine temperature warning can even read the real-time data stream, scan and clear trouble code.

### 2.1 Product Description



- ESC BUTTON**  
Returns to previous menu
- UP SCROLL BUTTON**  
Move cursor up for selection

— 2 —

- DOWN SCROLL BUTTON**  
Move cursor down for selection
- OK BUTTON**  
Confirms a selection(or action) from a menu list,

In some interfaces, the function of long press for more than 3 seconds is different from that of short press for less than 1 second.

- 1: Automatically adjust the brightness of the photosensitive port
- 2: DLC(Data Link Connector or Diagnostic Link Connector)
- 3: USB Upgrade port

### 2.2 Specifications

- 1)Display: TFT color display (0 x 320)
- 2)Operating temperature: 0 to 60°C (to 140°F)
- 3)Storage temperature: -20 to 70°C (-4 to 150°F)
- 4)External power: 8.0 to 18.0V power provided via vehicle battery
- 5)Dimensions:
 

Length	With	Height
130mm(5.11")	25.8mm(1.01")	84mm(3.30")

— 3 —

6)Weight: 0.30kg(without wire) 0.40kg(with wire)

## 3.Accessories included

- 1)User's manual: instructions on product operations
- 2)OBD2 cable: provides power to product and communicates between product and vehicle
- 3)USB cable: used to upgrade the product

## 4.Location of the Data Link Connector(DLC)

The DLC(Data Link Connector or Diagnostic Link Connector) is the standardized 16-cavity connector where diagnostic scan tools interface with the vehicle's side for most vehicles. If data link connector is not located under dashboard, a label should be there telling location. For some Asian and European vehicles, the DLC is located behind the ashtray and the ashtray must be removed to access the connector. If the DLC cannot be found, refer to the vehicle's service manual for the location.

## 5.Product operating setting

- 1)Display interface switch

— 4 —

Press UP/DOWN button to switch display, Short press (within 1 second) to enter full-screen single data display, or long press (over 3 seconds) to enter data stream data option selection. Short press as shown in Figure 2-1, long press as shown in Figure 2-2:

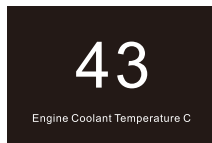


Figure 2-1

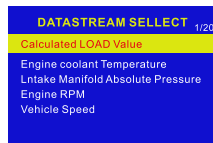


Figure 2-2

2)Long press the ESC key to enter the settings, here you can set: Language, System para set, OBD para set, Alarm set, OBD Diagnose, 0-100km Time, About, As shown in Figure 2-3

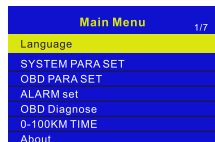


Figure 2-3

— 5 —

## 6.Product update

This update function allows you to update the product software through a windows computer upgrade your product, you need the following tools:

- 1.KW206 OBD auto meter
- 2.Windows PC(win xp, 7,8,10) with internet connected
- 3.Mini-USB cable

### Steps:

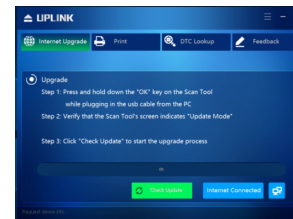
Download and install the applications from konnwei official website: [www.konnwei.com](http://www.konnwei.com) on windows computer.

- 1)Run uplink.exe in your computer(Not mac OS compatible) before click the "check update", make sure that on left bottom corner, you see the "Device connected to COM X", otherwise, please check if the driver is installed properly or not
- 2)Keep pressing any button of the scanner, meanwhile connect to USB cable to PC with scanner, make sure the screen is displayed "Update Mode" then released.
- 3)Open the uplink software, click the "Check

— 6 —

Update", the intelligent software and device will finish its update process on its own. The process will take around 2 minutes depends on the network connectivity.

- 4)During the update procedure, please do not disconnect the USB connection



### NOTE:

\*the uplink program is working for all windows series computer, please use it on official certified windows OS, otherwise the driver may not be able to install.

\*some anti-virus software may give warning when install it, please turn off the anti-virus software before installation, it's a clean and green software with authentication by google.

— 7 —

\*please ignore the Microsoft Modem drivers install failure if you are not using windows system.

\*if the product to be malfunctioning after update, it may need to reinstall the update. Hold down the any button until the product has been forced into update mode, then repeat the update installation procedure outlined above.

## 7.Service procedures

If you have any questions, please contact your local store, distributor or visit our official website at [www.konnwei.com](http://www.konnwei.com) to get more information. If it becomes necessary to return the product for repair, contact your local distributor for more information.



Landline:+86 0755-83976998  
 Email:[konnwei@konnwei.com](mailto:konnwei@konnwei.com)  
 website:[www.konnwei.com](http://www.konnwei.com)  
 Factory Add.: No.49 Floor 4 Building 6, Education North Rd.GaoQiao CommunityPingDi Str., LongGang Dist, Shenzhen City, China.

— 8 —